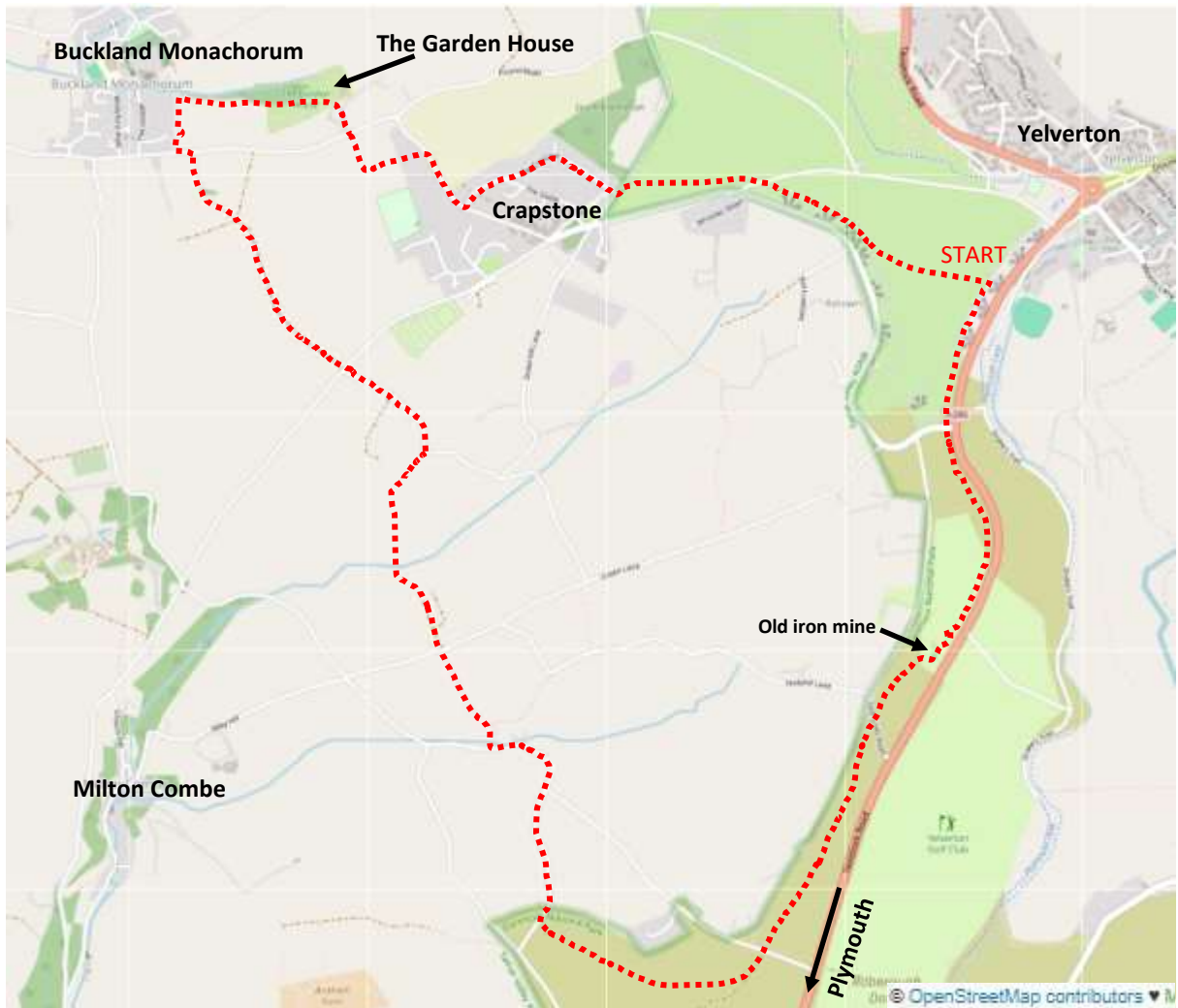


# A Countryside walk to Buckland Monachorum from Yelverton and back via The Garden House and Harrowbeer Airfield



**This 6 mile walk starts at Roborough Rock Rock and uses mostly footpaths with just a small amount of minor road walking. If you are aiming to have a stop at The Drake Manor pub at Buckland its about a 2 hour walk from the start.**



**Park in one of the wartime dispersal bays backing on to the A386 and start by walking away from Yelverton along the airfield road towards Roborough Rock**



**Keep to the left of the Rock when you reach it and cross over the road next to the Queen Victoria Jubilee Monument then.....**





**...using the footpath next to the fence walk past all of the golf course greens on your right.**



**At the end of the golf course is this long since abandoned iron mine.**

**Walk around to half way down the other side.**





**Then carry on parallel with the A386 but a little further away .**



**When you reach Golf Links road go straight across in the same direction to take a path midway between the A386 and the trees on your right .**

**When you reach the next road go straight across again in the same direction but this time only for 100m.**







**After about 100m  
start to bend right .**

**If you look to the  
horizon of trees you  
will see a group of 5  
quite distinctive  
looking pine trees .**

**Stick to the paths  
that take you  
towards these trees.**





Eventually as you get close take a path that will leave the trees on your left.

Go past the boulders and turn right when you reach the little lane.







**Stay on the lane  
first going  
through the  
gate...**

**...bearing left  
when the lane  
bends  
sharply right.**



**Keep left to go past  
Combe Farm.**

**Then just past the  
farm turn right to  
go through a  
wrought iron gate.**







**Go over  
the bridge  
and fork  
right....**

**...to go up the hill to  
a gate in the corner  
of the field**



**Go through the gate  
and turn left ....**

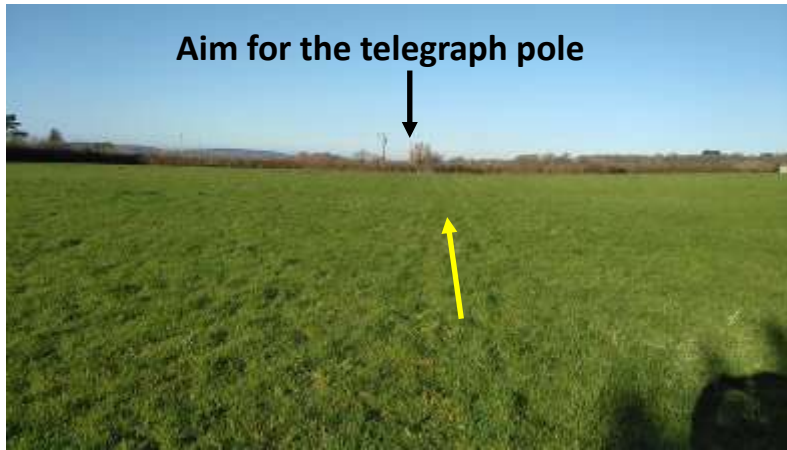
**...to go through this gate  
which is quite heavy to open  
and close.**







**Initially keeping the hedge on your right follow the way markers until you reach a road.**



**Aim for the telegraph pole**

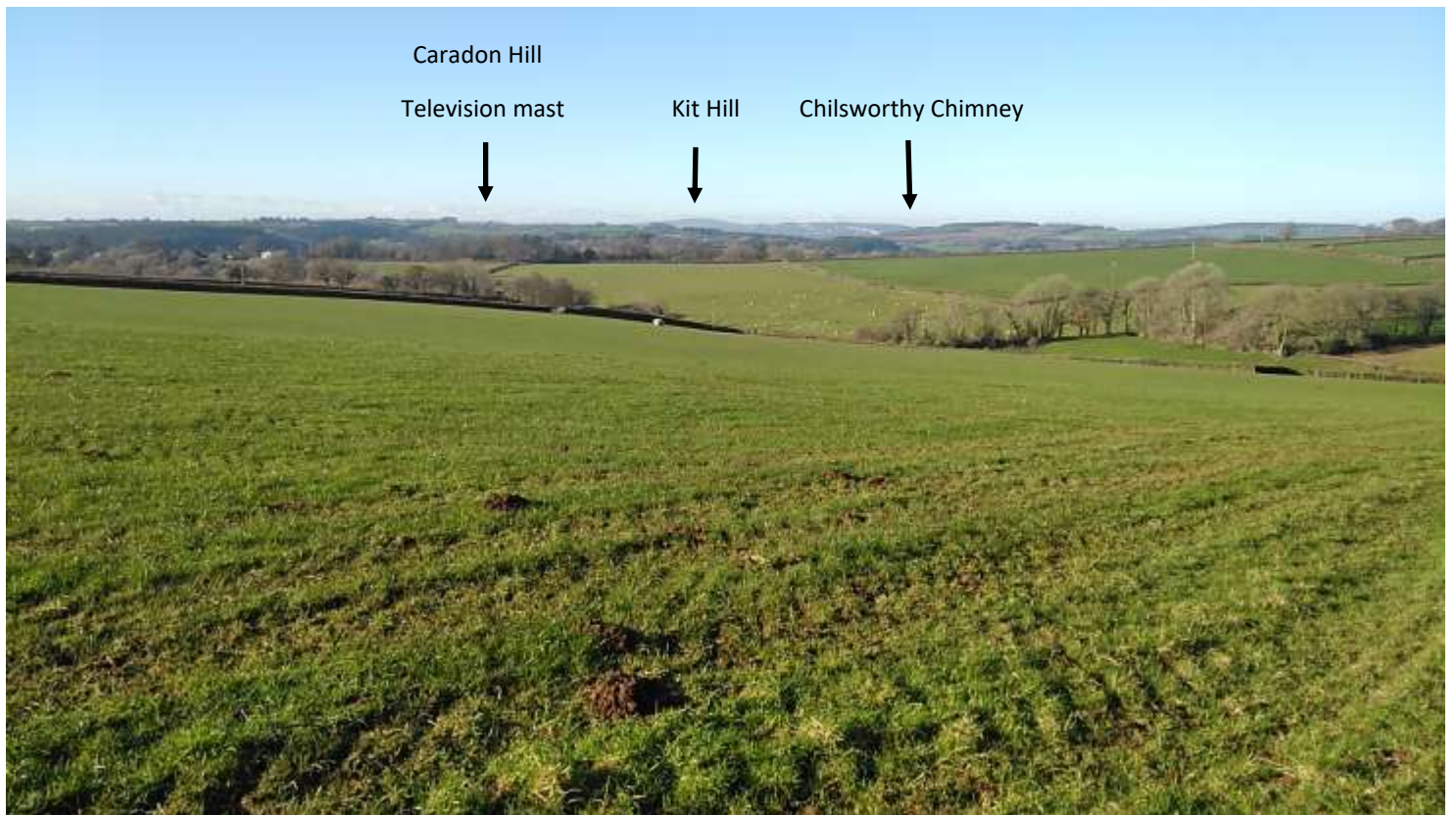


**Go straight across the road and through the kissing gate....**

**...and walk down the field edge with the hedge on the right admiring the view on your left.**







**Go through the gate in the corner of the field and go diagonally left to a bridge across the stream**

**Turn right up the tractor track into a field and then into the next field.**







**Go up to the pole and fork diagonally right to head for the top corner of this quite damp field.**

**Go through the gate**  
*(Which has been replaced by a metal one)*



**Then turn left to walk up Venton Lane.**





**When you reach the T junction go straight across through the gate and into the field with the hedge on your left.....**

**...and follow the tractor tracks all the way to and through this opening.**



**When you reach a private drive go straight across aiming for a prominent house in the distance.**







**Follow the wall and then hedge on your left all the way to a road..**

**..and turn left but take care stepping on to the road as cars cannot easily see you.**



**Before you reach any houses turn right through this gate and follow the hedge on the left all the way downhill**

**Turn right when you reach the stream.**

***To visit the church or pub in Buckland Monachorum go over the bridge and left at a stone stile but then come back to this side of the stream.***







**From the bridge with the stream on your left follow this well used path all the way up to and through the grounds of The Garden House.**



**Please keep to the path and follow the signs out through the car park to the road.....**



**.....or pay to go in and see the gardens. (Allow at least 2 hours)**





**When you reach the road go straight across and through the gate .....**

**...then in 50m turn left along a narrow path.**



**When you reach the Crapstone road turn right ....**

**...then first left into The Crescent.**







**Turn left at the T junction and then in just a few meters go over the cattle grid .....**

**...then immediately the other side of the cattle grid go right and walk into the airfield.**



**Go across the airfield towards this house.**

**Turn right next to the house and when the Rock comes in to view walk back to your car.**





# Useful links

**Drake Manor Inn Buckland Monachorum**

<http://drakemanorinn.co.uk/>

**Harrowbeer Airfield**

<https://rafharrowbeer-dartmoor.org.uk/>

**The Garden House**

<https://www.thegardenhouse.org.uk/>

**Words and pictures by David Simkins December 2020**