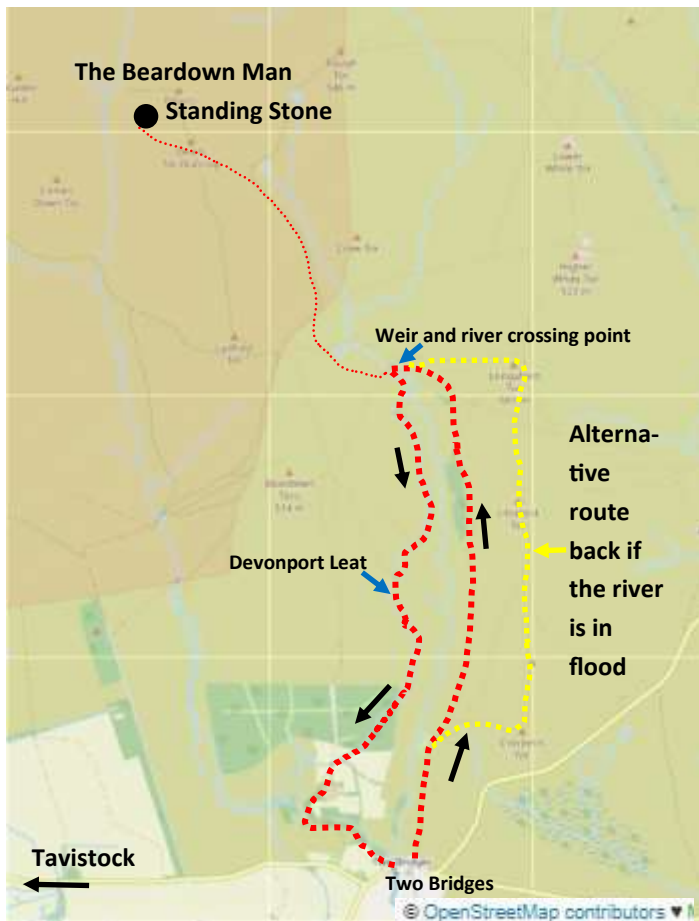


# Wistmans Wood and return via Devonport Leat

With an excursion to The Beardown Man



An easy 4.5 mile moorland walk with hardly any hills. The walk starts from the little quarry car park opposite the entrance into the Two Bridges Hotel about 4 miles east of Tavistock .

The excursion to the Beardown Man would add another 2 miles and can only be done when there is no live firing.

*If you are walking in the winter and its been very wet then you may not be able to cross the river at the weir. Instead walk up to Longaford Tor and walk back via Crockern Tor the seat of the Ancient Stannary Parliament. Its also a well walked path but take a map with you.*



**On leaving the car park go through the wooden gate. The track to the woods is walked by thousands of people every year so is very well worn.**



**Fork right as you pass the white cottage (which is permanently occupied and is not a holiday home)**



**Follow the well walked track**



**In places  
it does  
become  
very rocky  
and worn**

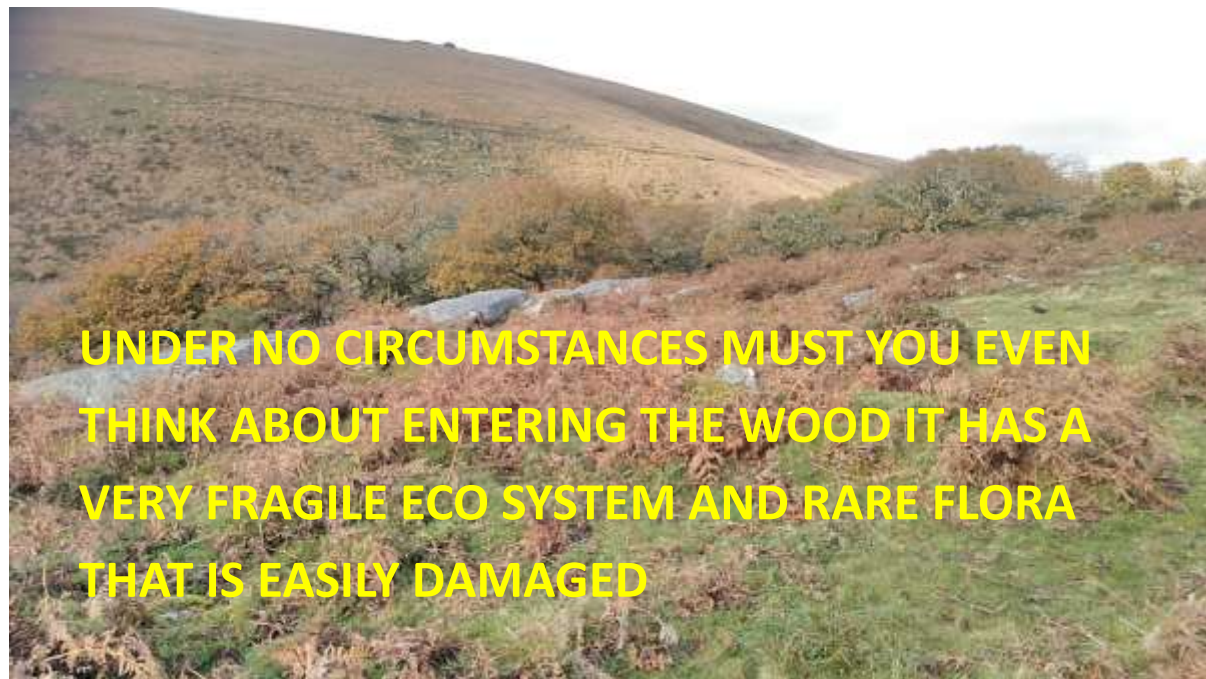


Getting closer to the wood

**Over  
the stile**

**When you  
arrive at the  
fork in the  
path take the  
upper route  
its easier**

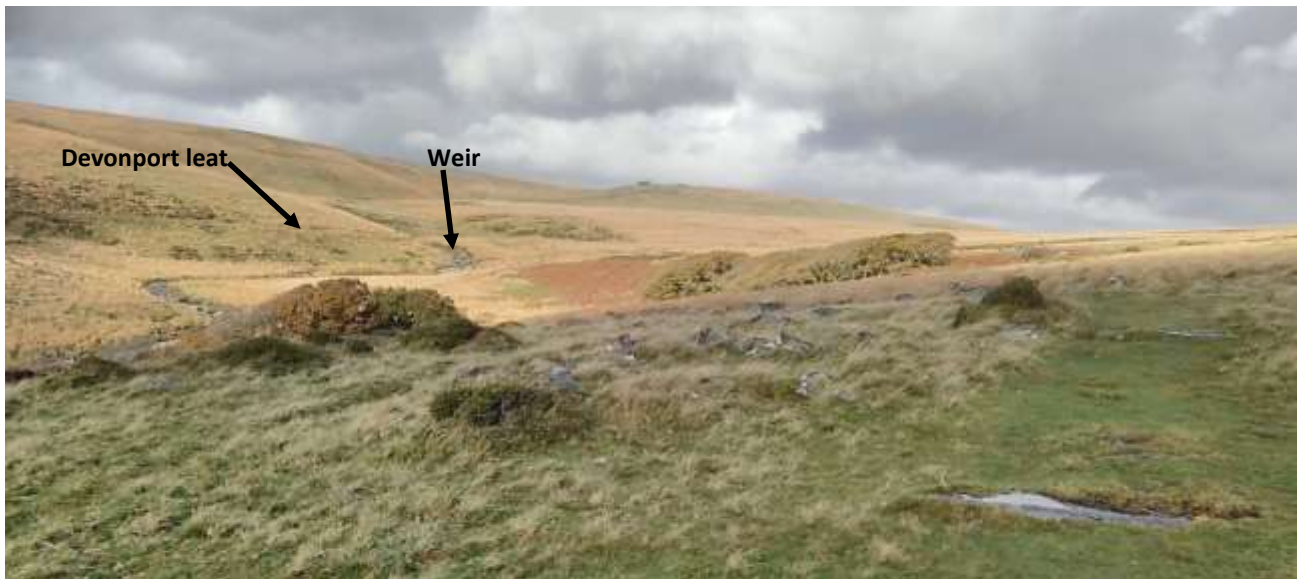




**Soon you will start to walk past the wood on your left .**



**Fortunately it is just about impossible to walk into it.**



**The wood is divided up into three sections and we are going to walk past all of it and cross the river at the weir.**

**But first we are aiming to go past the large rock you can see in the distance**



**the path through the boulders looks impossible but is clear when you get there.**

**You will now start to see the weir quite clearly but do not attempt to cut corners instead keep going until it is on your left otherwise you will be walking in very soggy terrain**



**Now you can walk down to it**



**Via this well used rickety stile**



**Sometimes you have to give in and walk back to the car but the water is usually low enough for you to get across quite easily**



**I used the rocks below the weir then walked up the central wall**

**then up the steps .**





**Having traversed the weir  
follow the Devonport leat  
(unless you are doing the  
Beardown Man excursion)**

**staying on the left at all times.**



**Over the stile and  
through the wood and**

**when you reach this  
road over the leat  
turn left and walk on  
down the farm track**







**Follow the very wide farm track passing the farm buildings on your left**



**Turn Right at the T junction**



**Walk over the bridge**

**But immediately on the other side fork left off the track to walk through a wood.**



**This is the bridge from below.**

**You now follow the path through the wood with the river on your left**



**Over a bridge**



**Through a field**



**Between two stone walls**

**And out on to the road where we now turn left and using the wide verge walk back to the car**



# Excursion to The Beardown Man

This will add another two and a half miles to the walk and you can only do it when the red flag is not flying on Beardown Tor . It's a bit damp in places but not a difficult walk and you do get to see one of the tallest standing stones on the moor

If the flag is flying you cannot go to the Beardown Man



From the weir and with the river on your right follow the path up the slope. If you look ahead of you and a bit to the left, and especially if you have binoculars, you will see a ladder stile breaking the line



of the hillside horizon. We are aiming to climb over the stile which is just inside The Merrivale Ranges Danger Area. To get there we need to walk up on the left side of

the rough area you can see on your left. Don't attempt to walk straight to the stile you will literally get bogged down. There is a bit of a path up the hill but it is faint in places. Once you get to the top walk across the back of the rough area and here you will see some useful sheep tracks which will take you to the stile. **Be aware you cannot go there if the Red flag is Flying.** Once over the stile walk ahead with the river valley floor on the right below you. Stay on the



same contour as you walk around the hill . When you see a granite outcrop on the next horizon walk towards it. It will get a bit soggy on the way. Walk up and past the outcrop on your right and on to the plateau behind. Keep going but bending a bit to your left to stay on top of the plateau. It does get very

damp in places but eventually in the distance ahead of you the Beardown Man will come into view. Its an excursion and not a circular walk so just retrace our steps to get back to the weir.





## Dartmoor Ranges firing programme for all ranges

<https://www.gov.uk/government/publications/dartmoor-firing-programme/dartmoor-6-week-firing-notice-9-march-to-19-april-2020>

This web site should automatically update

Do not touch any military debris it may be dangerous. Please note the location and inform a Training Safety Officer (TSO) or police.

## Information on Wistmans Wood

<https://www.dartmoor.gov.uk/enjoy-dartmoor/places/wistmans-wood>