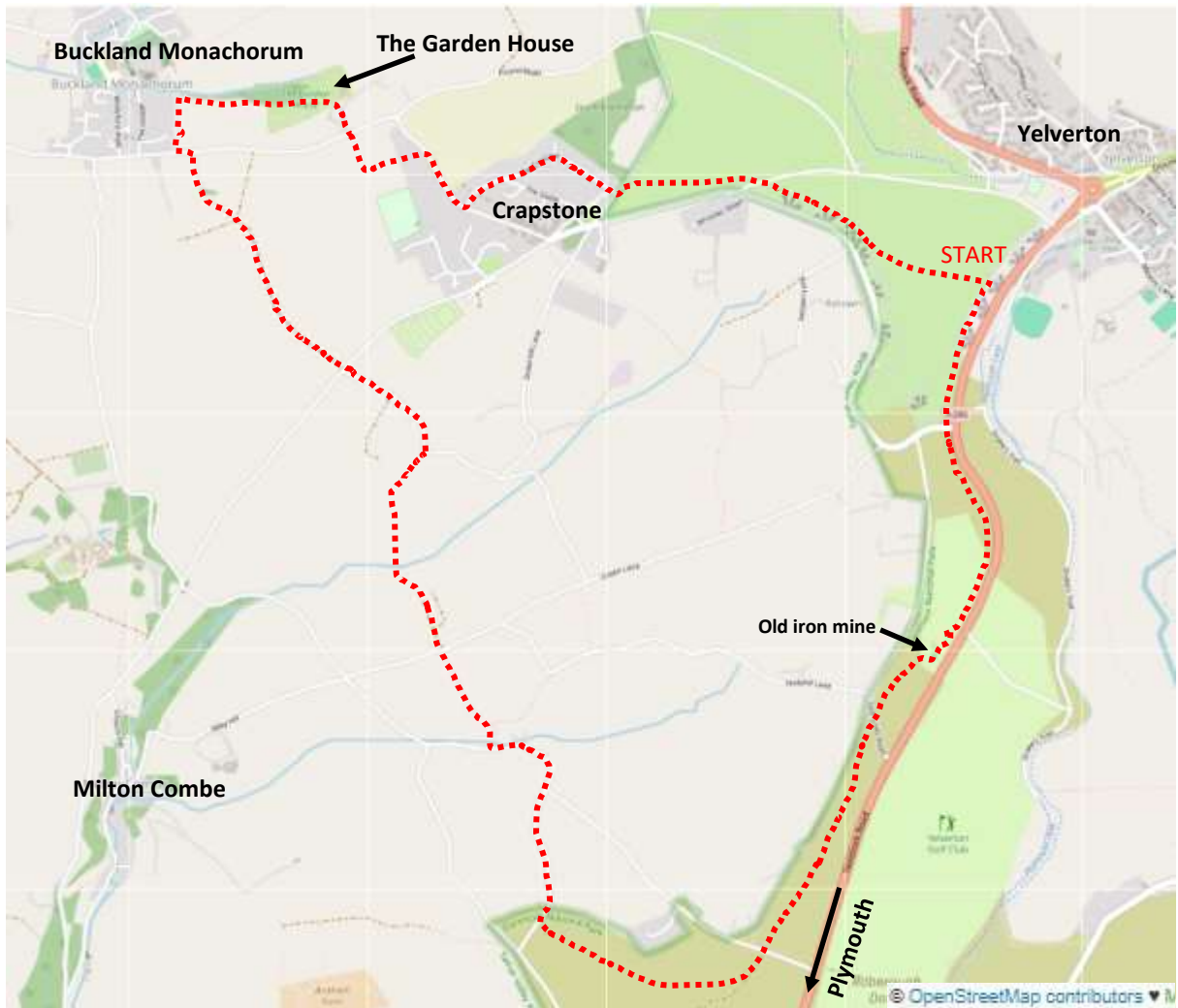


A Countryside walk to Buckland Monachorum from Yelverton and back via The Garden House and Harrowbeer Airfield



This 6 mile walk starts at Roborough Rock Rock and uses mostly footpaths with just a small amount of minor road walking. If you are aiming to have a stop at The Drake Manor pub at Buckland its about a 2 hour walk from the start.



Park in one of the wartime dispersal bays backing on to the A386 and start by walking away from Yelverton along the airfield road towards Roborough Rock



Keep to the left of the Rock when you reach it and cross over the road next to the Queen Victoria Jubilee Monument then.....



...using the footpath next to the fence walk past all of the golf course greens on your right.



At the end of the golf course is this long since abandoned iron mine.

Walk around to half way down the other side.



Then carry on parallel with the A386 but a little further away .



When you reach Golf Links road go straight across in the same direction to take a path mid-way between the A386 and the trees on your right .

When you reach the next road go straight across again in the same direction but this time only for 100m.





After about 100m start to bend right towards 5 distinctive looking pine trees on the horizon.



Stick to the paths that take you towards these trees.



Eventually as you get close to them take the path that will leave the trees on your left.



When you reach the road turn right



**Stay on the lane
first going
through the gate
by the cattle
grid...**

**...then bearing
left when the
lane bends
sharply right.**



**Keep left to go
past Combe
Farm.**

**Then just past the
farm turn right to
go through a
wrought iron gate.**





**Go over
the bridge
and fork
right....**

**...to go up the
hill to a gate in
the corner of
the field**



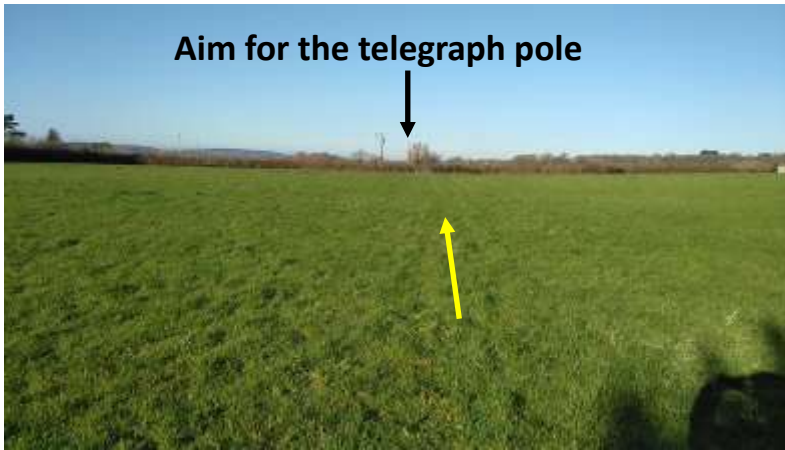
**Go through the gate
and turn left**

**...to go through this gate
which is quite heavy to open
and close.**





Initially keeping the hedge on our right follow the way markers until you reach a road.

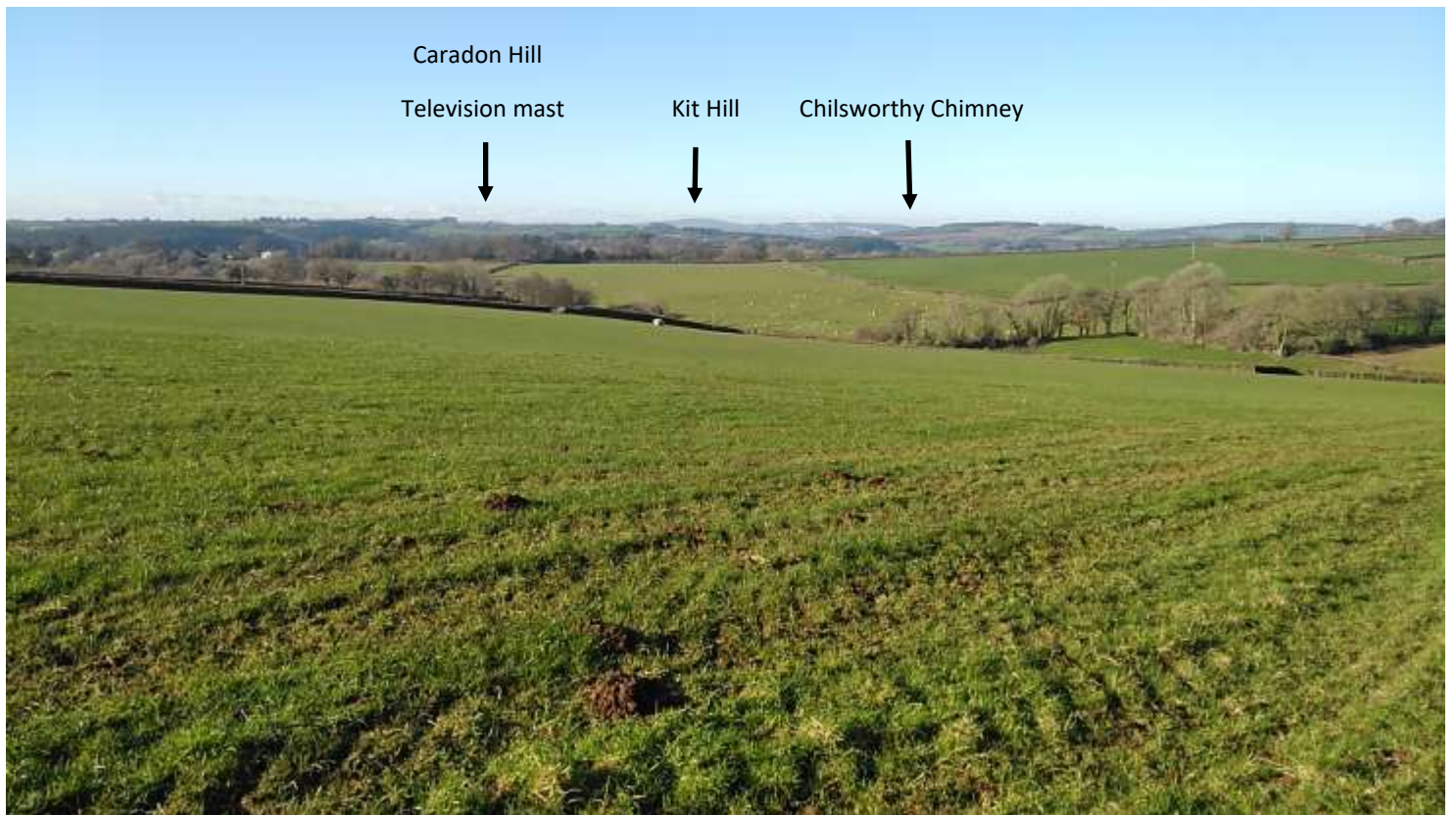


Go straight across the road and through the kissing gate....



...and walk down the field edge with the hedge on the right admiring the view on your left.





Go through the gate in the corner of the field and then go diagonally left to reach a bridge over the stream.

Go over the bridge and follow the track into a field and then into the next field.





Go up to the pole and fork diagonally right to head for the top corner of this quite damp field and go through the gate.



Then turn left to walk up Venton Lane.



When you reach the T junction go straight across through the gate and into the field with the hedge on your left.....

...and follow the tractor tracks all the way to and through this opening.



When you reach a private drive go straight across aiming for a prominent house in the distance.





Follow the wall and then a hedge on your left and when you reach the road turn left...

...but take care stepping on to the road as cars cannot easily see you.



Walk down the road to the T junction and turn right and into the village of Buckland Monachorum passing the Drake Manor Inn on your right.

Fork right off the road to go through the parking area in front of the church.



The path takes you around the church yard. Go either over or around a stone stile and turn right and walk on down to the stream.



Go over the bridge and turn left and with the stream on your left go through 2 fields and into the grounds of The Garden House.

Please keep to the path and follow the signs that take you out through the car park to the road.....



**.....or pay to go in and see the gardens.
(Allow at least 2 hours)**



When you reach the road go straight across and through the gate

...then in 50m turn left along a narrow path.



When you reach the Crapstone road turn right

...then first left into The Crescent.





Turn left at the T junction and then in just a few meters go over the cattle grid

...then immediately the other side of the cattle grid go right and walk into the airfield.



Go across the airfield towards this house.

Turn right next to the house and when the Rock comes in to view walk back to your car.



Useful links

Drake Manor Inn Buckland Monachorum

<http://drakemanorinn.co.uk/>

Harrowbeer Airfield

<https://rafharrowbeer-dartmoor.org.uk/>

The Garden House

<https://www.thegardenhouse.org.uk/>